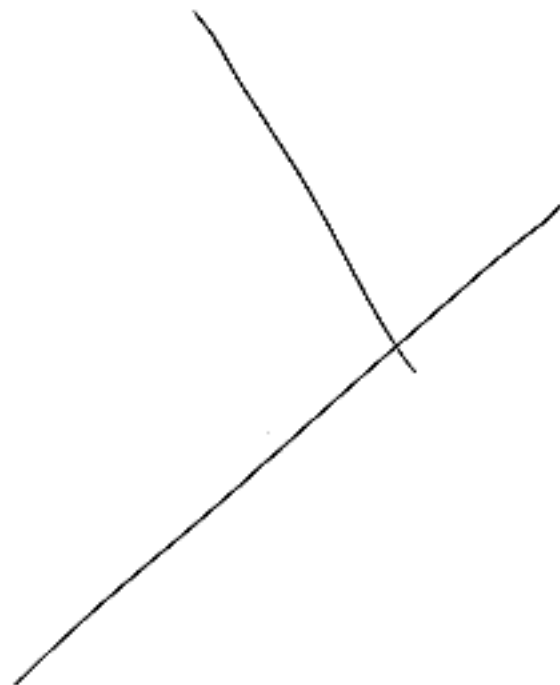


SIC6-A5C3

SIC6-A5C3



STOP

SIC6-ASC3

SIC6-ASC3



STOP

SIC6-ASC3

SIC6-ASC3

P: Complex

B: soft

I: manmade

A: dynamic

STOP

SIC6-ASC3

PL: Complex

B: Semi-soft

I: manmade

A: dynamic

STOP

SIC6-ASC3

PL: Complex

B: hard

I: manmade/natural

A: static

STOP

SIC6-ASC3

Colors
green
blue
brown
grey-mistle grey

	Sights	Sounds	Smells Tastes	Temps	Textures
		whir	vegetation	warm	hard
		—	like the ocean or beach	moderate	soft marshy wet
		whir	musty	warm	firm
		whir & vibration	sharp stinging dusty	moderate	mushy
		like the wind moaning	fresh air clean	warm	sharp impinging ragged
		low vibration	vegetation	warm	hard broken loss of function
	;		STOP		

BRIE
low

FOCUS
medium

SIC6-ASC3



	Sights	Sounds	Smells Tastes	Temp	textures	P
COLORS blue blue-gray silver green black		whir	musty	warm	soft wet	gushing
		-	sour stale	warm	brittle	shattered lets in light
		buzzing	stale musty mildew	warm	hard	"C" like a clamp
		tinkle	hot oil greasy sweaty	warm	semi- soft	bracket
BRITE low						
FOCUS low			STOP			

S₂ Phonics

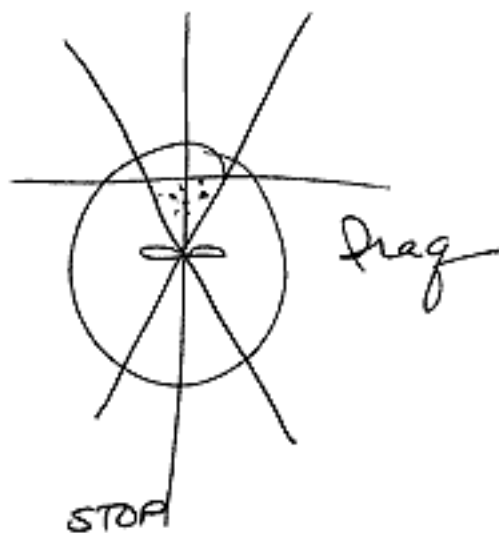
A: aerial airplane crash accident arm

ε: eject trees vegetation helicopter rescue

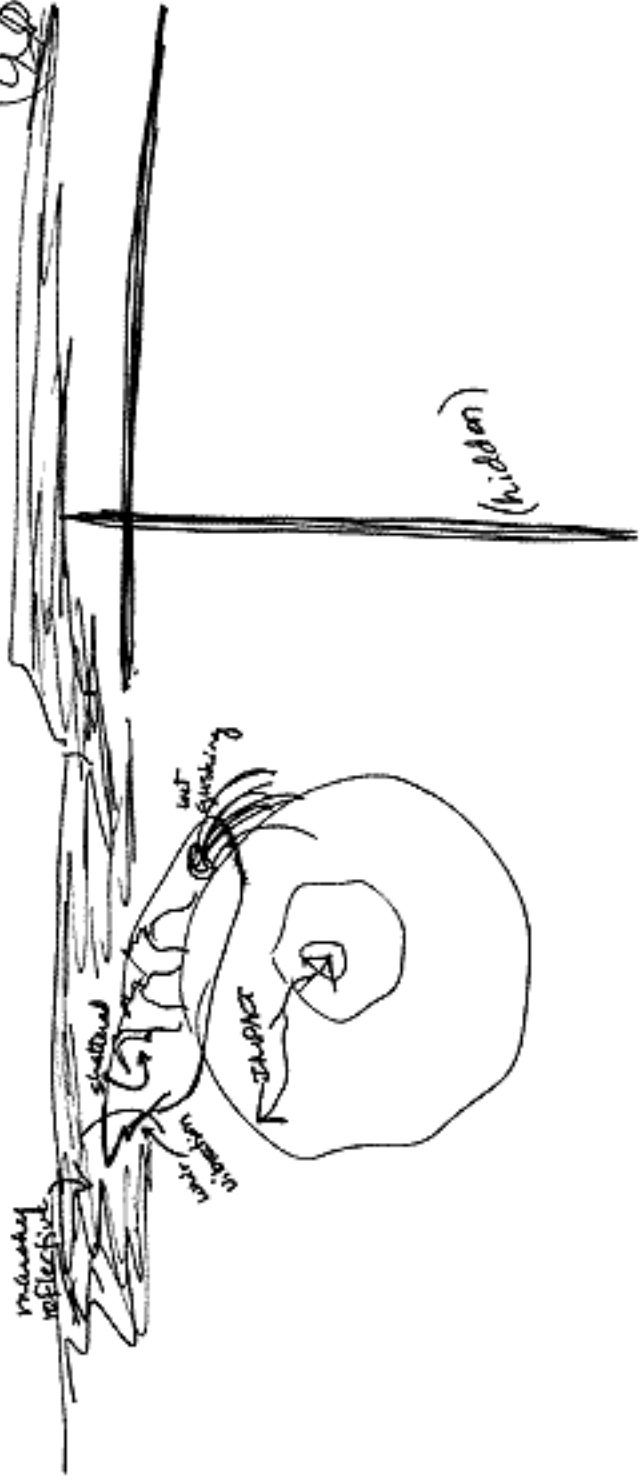
I: pilot mission impact

O: forest wooded chopper lost down

u: judge



air
rescue



stop

CASCADE

LAND 1 AIR 1 WATER N/A STRUCTURE 2

ENERGY OBSTACLE

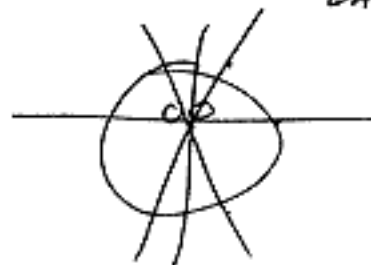
Life: vegetation med (n/a)

Life: human single

Life: other

BLACKBOARD

LAND 1



clearing with
vegetation around
marshy wet springs
windy
vegetation smells
hot smells/acrid
digging

BLACKBOARD

AIR 1

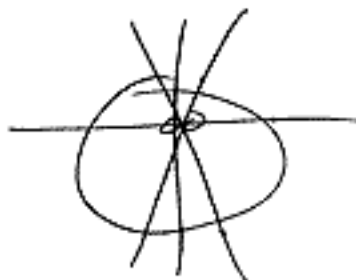


choppy sounds
vehicle in air
smell of danger
adrenalin rushing
Rescue / Search
missions

STOP

BLACKBOARD

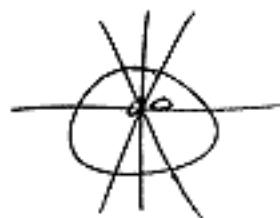
structure 1



Broken
shattered
crashed
vegetation milled
marshy smells
impact/explosion
crackling sounds
planning

BLACKBOARD

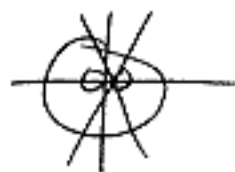
structure 2



boxy flat top
high tower
observation
drop/lob something
aim at object
on ground

BLACKBOARD

human single



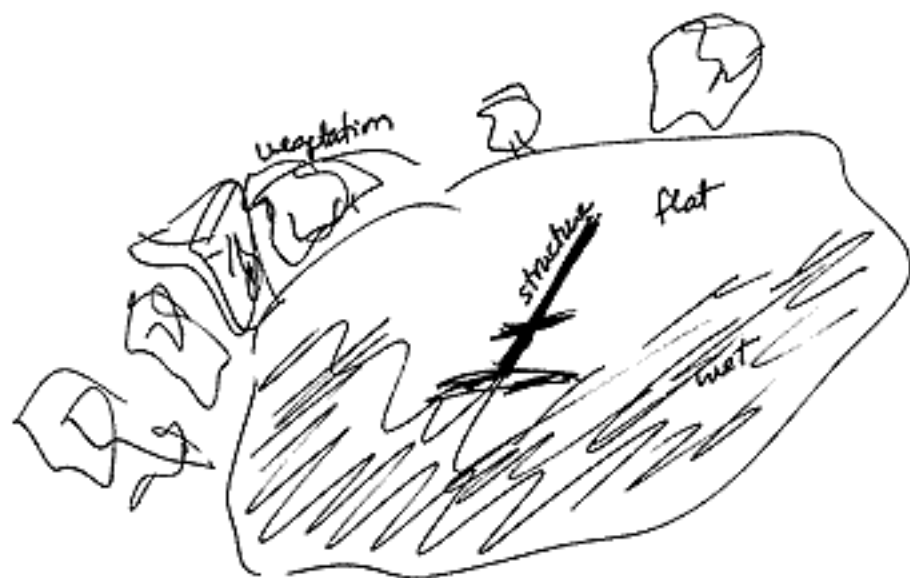
eject
forced landing / hard
shot at on landing

mark
markman

STOP

BLACKBOARD

LAND 1



578

BLACKBOARD

AIR 1



STOB

BLACKBOARD

structured



STOP

BLACK BOARD

structure 2



BLACKBOARD

Human singe



SPD

Diarization

This involves aerial vehicles - one crashed - the other searches - in a dry climate but wet marshy clearing surrounded by vegetation. A large tall structure is involved - used as a "lookout" tower with a flat roof. Objects are "lobbed" from the roof to an impact point on the ground.

Main human ejected from plane - injured by "lobbing" incident after crashing/landing.

This feels not current - recent past? $\approx 10+$ yrs ago. People wonder about his fate.

This may have happened @ ~~the~~ night - dim with greenish "flashes" or flare on impact

Not in the immediate area, but somehow involved (? searching) were many men in uniform on hidden trails - single file - carrying bulky "backpacks".

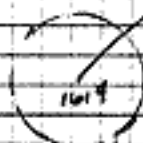
SEP
end session

ANNEX A

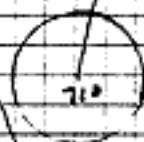
$$\frac{311}{131}$$



$$\begin{array}{r} 44 \\ -24 \\ \hline 224 \end{array}$$



$$\frac{19}{190}$$



$$\frac{333}{153}$$

