

S106-A5C3

S106-A5C3



STOP

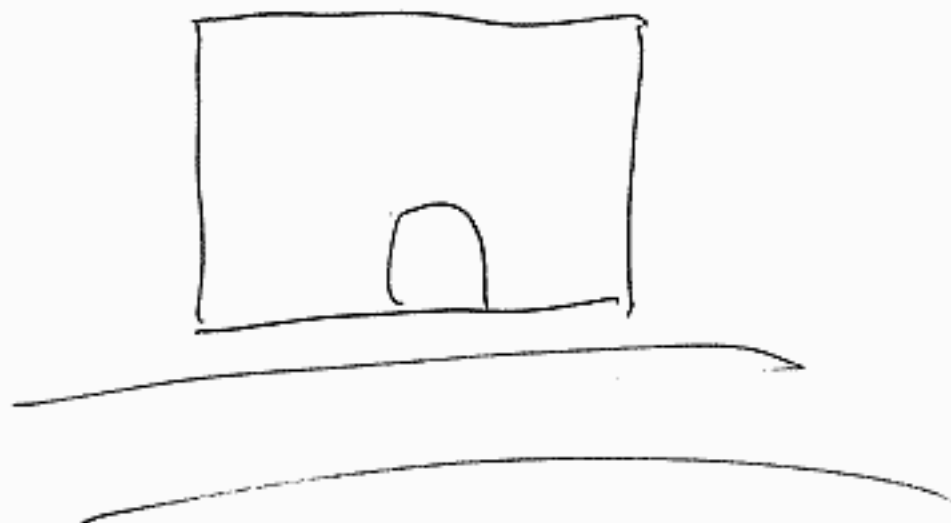
SIC6-A5C3
SIC6-A5C3



STOP

SICG-A5C3

SICG-A5C3



STOP

IDBOGRAM
PROBES

PAGE 1A:
PAT:
TIME H:

SICG-A5C3

SICG-A5C3



PL: SIMPLEX
B: SOFT
I: NATURAL
A: STATIC

STOP

SICG-A5C3



PL: SIMPLEX
B: HARD
I: MANMADE
A: STATIC

STOP

SICG-A5C3

A large, stylized handwritten signature in black ink, appearing to be 'J. M. W.', written over the text 'SICG-A5C3'.

PL: COMPLEX
B: HARD
I: MANMADE
A: STATIC

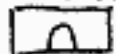
STOP

SICG-A503

SIGHTS SOUNDS SMELLS/TASTES TEMPS TEXTURES

COLORS
BLUE

PRISON



WALLS



FENCE

LIKE
LOUD
SPEAKERMUSTY
/ STALE

WARM

HARD

BRITE
MED

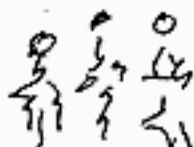
CELL

NOISY

FOUL
/ LIKE
ROTTEN FOOD

WARM

HARD

FOCUS
LOWTALKING
FOREIGN
LANGUAGELIKE
SWEAT
/

WARM

SOFT



METAL DETECTOR

/

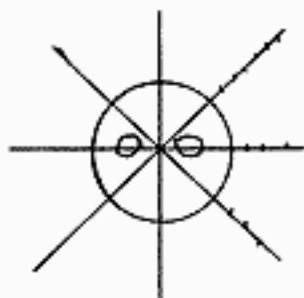
/

COLD

HARD

STOP

SICG - ASC3



SIGHTS SOUNDS SMELLS/TASTES TEMPS TEXTURES P

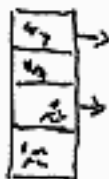
COLORS
BLACKTALKING
IN SOFT
VOICE

WARM

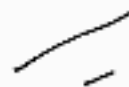
SOFT

MAN
IN
JAIL

TOP VIEW

BRITE
LOW

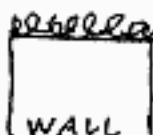
FOUL



WARM

HARD

CELLS

FOCUS
MED

HARD

ENCLOSURE

STOP

S2 PHONICS

A:: ALLAH WAR

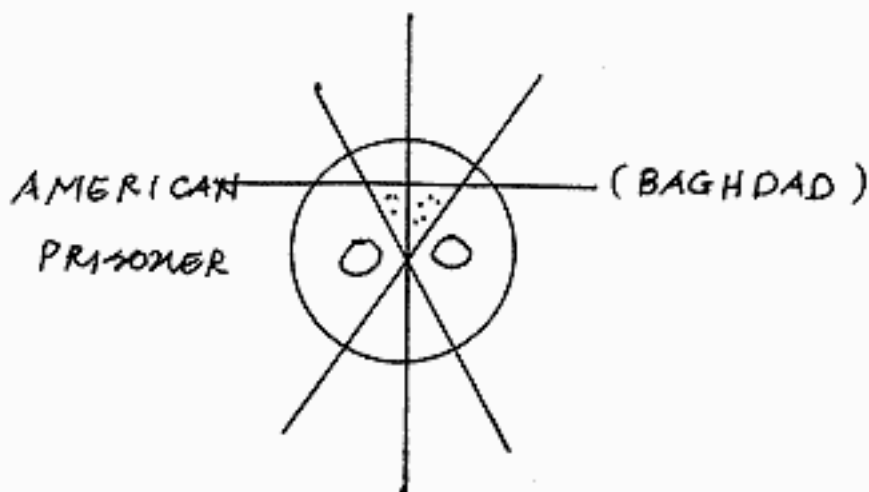
E:: RELIGION SECRET

I:: INQUIRE HIDE

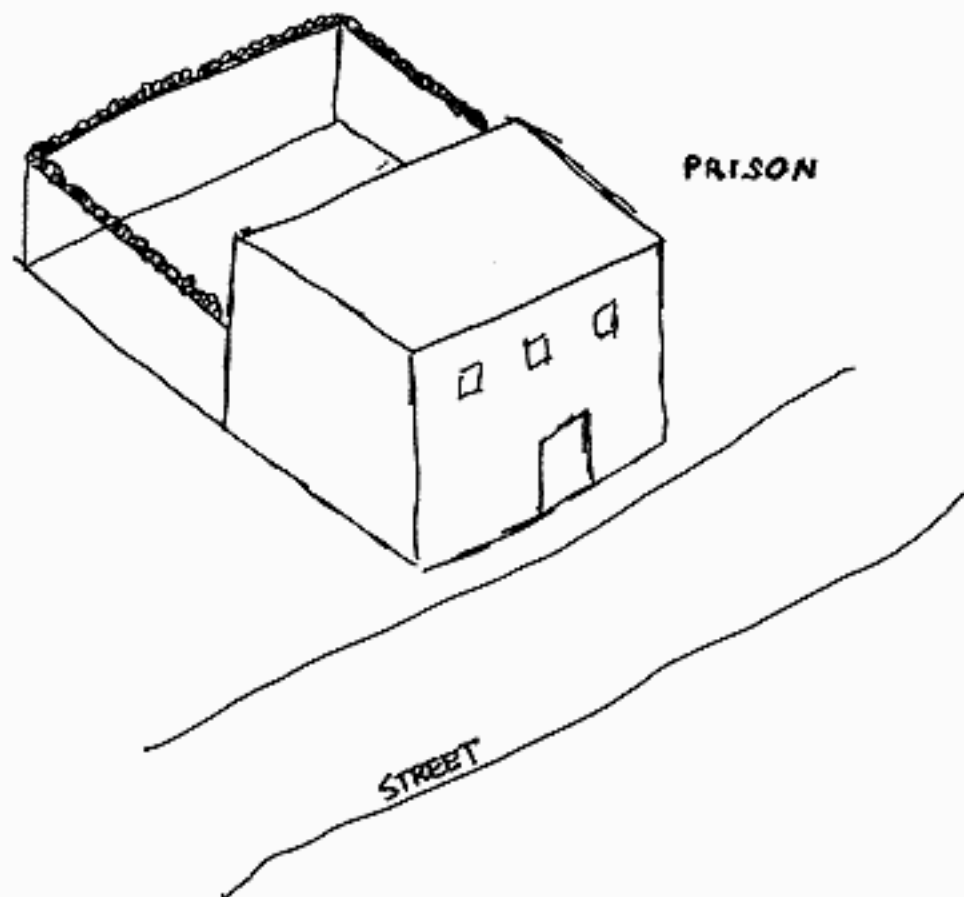
O:: OUTCOME

U:

FREE SPACE



STOP



CASCADE

LAND | AIR — WATER | STRUCTURE | ENERGY —
OBSTACLE —

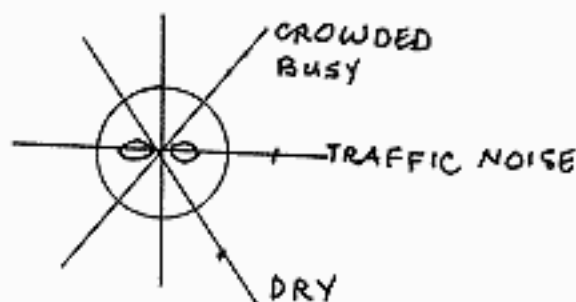
LIFE : VEG - LOW

LIFE : HUMAN - SINGLE / MULTIPLE

LIFE : OTHER /

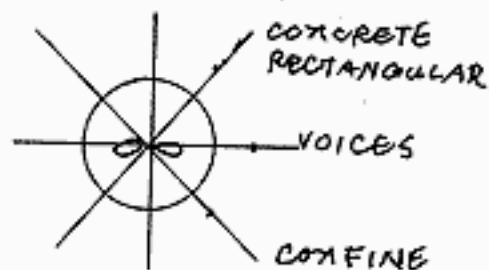
BLACK BOARD

LAND |



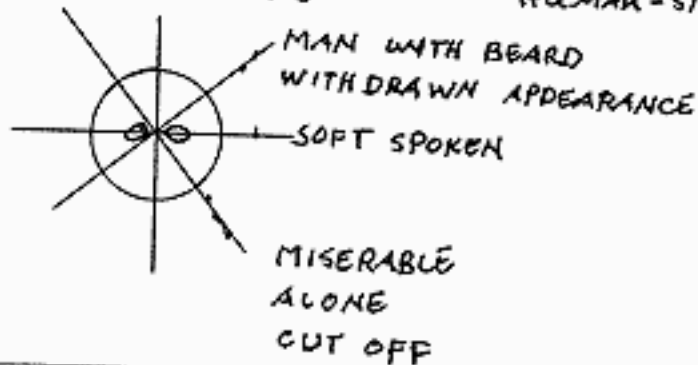
BLACK BOARD

STRUCTURE |



BLACK BOARD

HUMAN - SINGLE

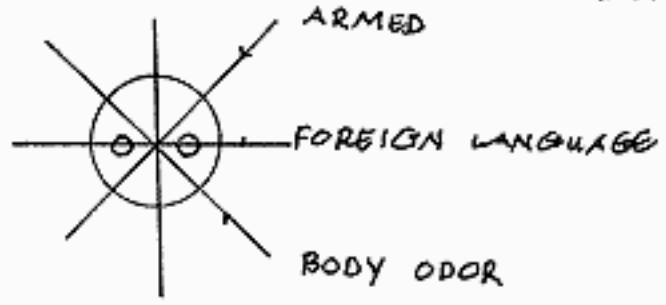


STOP

CASCADE

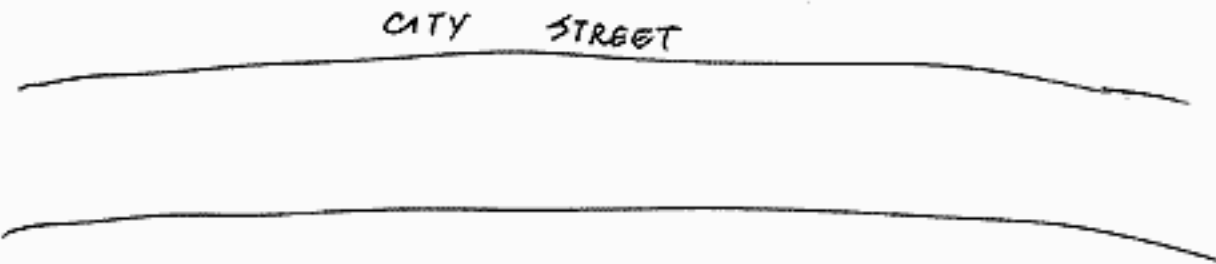
BLACKBOARD

HUMAN-MULTIP



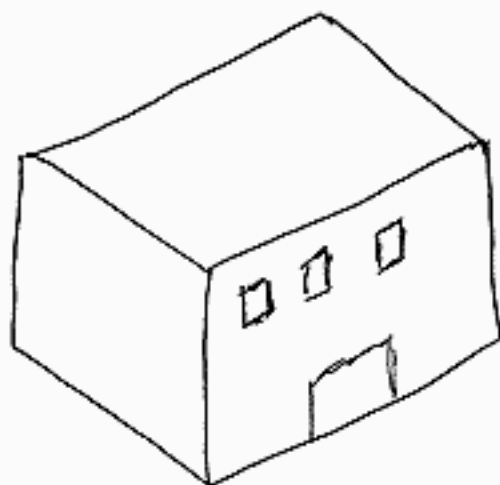
STOP

CITY STREET



STOP

MOVEMENT ORDER # 2



PRISON

STOP

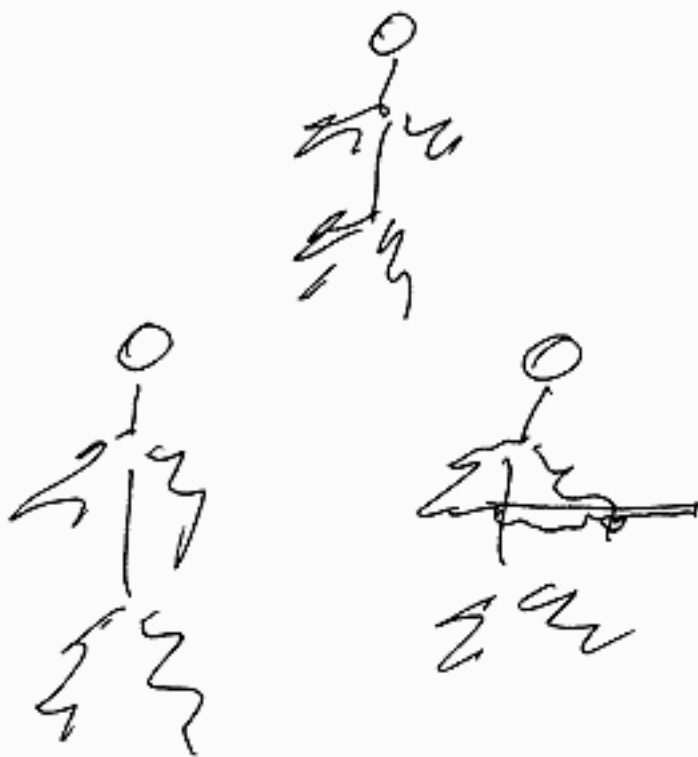
BLACKBOARD

HUMAN-SINGLE



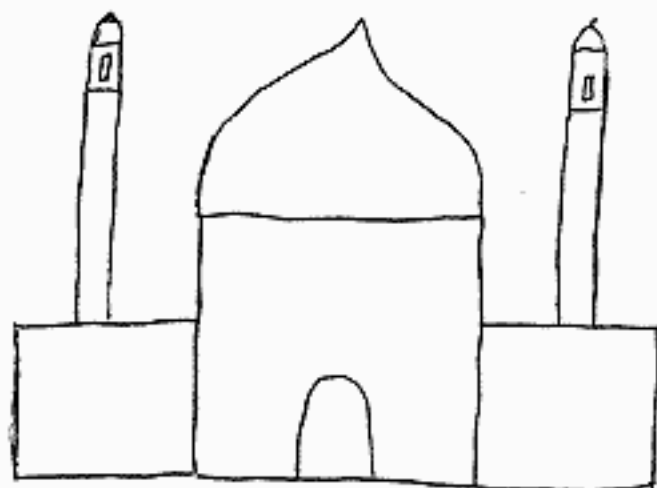
AMERICAN MALE PRISONER

STOP



PRISON GUARDS

STOP

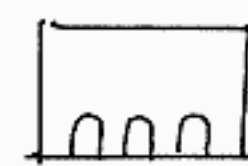
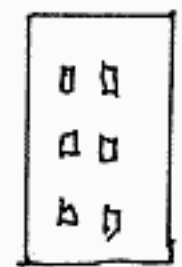
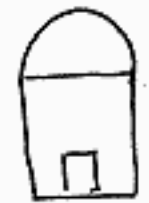


MOSQUE WITH TWO TOWERS
CEMETERY ADJACENT TO MOSQUE
(WHERE MISSILES ARE OR WERE STORED UNDERGROUND)

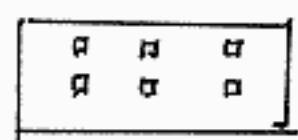
S.G.

DIA R I Z A T I O N

PAGE 2:
PAT:

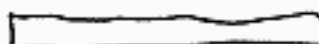
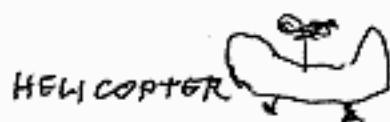


→ SADDAM
HUSSEIN



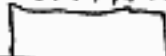
CITY

CURRENT LOCATION OF PRISONER



LANDING PAD

ENTRANCE

UNDERGROUND
FACILITY

I perceived a two story high concrete flat roofed building facing a street. At the entrance there are guards and an electronic metal detector. Past the entrance, there is a stairway to the left. On the second floor at the end of the corridor in the last room is where an American was being held captive. I perceived that he is apathetic regarding his situation. This man has a nickname. I saw him sitting on the floor with his head down. In the general area where the prison is located, there is a mosque with two towers. Adjacent to the mosque is a cemetery where missiles were or are hidden underground. Also in that area is a billboard size

picture of the face of Saddam Hussein. There is much activity and noise in this part of the city.

I perceived a recent transfer of the prisoner by helicopter. It landed on a pad next to an underground facility. This is a top secret location known only to a few. On the surface, it is indistinguishable from the surrounding terrain — except for the helicopter landing pad.

End of Section: 01:10

